



LBDR - Heifer Supplement (Actual weights & EPD updates)



LOT	Calf Tag	2/20/2022	EPD/\$Value Updates - as of 2/22/22										
		Weight	CED EPD	BW EPD	WW EPD	YW EPD	Milk EPD	Marb EPD	RE EPD	\$M	\$B	\$C	
201	6766M	900	Not Registered										
202	9765B	835	+17	-3.3	+58	+105	+32			+51			
203	9758M	985	+15	-2.1	+63	+116	+30			+67			
204	8750M	1000	+11	+4	+66	+103	+32			+76			
205	6745C	1095	+5	+3.4	+72	+135	+24	+18	+35	+48	+129	+215	
206	4714G	990	+5	+3.4	+63	+120	+28	+01	+48	+63	+116	+213	
207	6771G	995	Not Registered										
208	4727G-A	960	+7	+2.2	+69	+119	+24	+01	+45	+64	+113	+211	
209	1704M	845	+10	+1	+47	+79	+24	+56	+57	+66	+125	+228	
210	6713M	1030	-2	+5.6	+80	+140	+26			+57			
211	2723C	960	+5	+1.9	+61	+114	+25	+67	+20	+51	+133	+224	
212	8711M	1035	+7	+2.6	+65	+115	+24			+57			
213	3767C	925	Not Registered										
214	9707B	880	+10	-.2	+56	+105	+28			+65			
215	8726G	995	+6	+8	+61	+106	+20			+64			
216	1767M	900	+10	+3	+48	+83	+22	+45	+30	+70	+92	+189	
217	9550C	985	+5	+9	+69	+109	+19	+51	+38	+70	+124	+231	
218	4801M	1005	+4	+3.0	+74	+129	+23	+04	+39	+56	+114	+204	
219	2809G	855	Not Registered										
220	6729M	930	+3	+3.2	+67	+121	+25			+69			
221	9725M	945	+9	+1.3	+69	+123	+24			+69			
222	1782B	880	Not Registered										
223	7782M	1040	+8	+2.4	+80	+144	+30	+33	+43	+75	+133	+248	
224	2742G	965	Not Registered										
225	9756G	925	+17	-2.8	+57	+112	+36			+68			

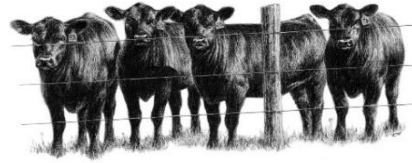


LBDR - Sale Heifer Supplement (Actual weights & EPD updates)



LOT	Calf Tag	2/20/2022	EPD/\$Value Updates - as of 2/22/22									
		Weight	CED EPD	BW EPD	WN EPD	YW EPD	Milk EPD	Marb EPD	RE EPD	\$M	\$B	\$C
226	6741C	1000	+13	-1.2	+54	+103	+28	+52	+18	+50	+125	+212
227	3719M	960	+10	+5	+51	+92	+27	+44	+37	+51	+116	+201
228	7708M	845	+11	-.3	+58	+109	+25	+58	+35	+69	+130	+238
229	7780M	890	+14	-2.2	+52	+86	+26	+59	+59	+70	+126	+233
230	4834M	925	+5	+2.8	+55	+101	+25	+41	+38	+57	+122	+215
231	6731M	980	+4	+1.5	+68	+118	+19	+54	+37	+58	+130	+227
232	6725G	895	+6	+1.5	+60	+114	+27	+43	+31	+64	+128	+230
233	5718M	935	+7	+2.3	+70	+128	+28	+27	+45	+68	+129	+235
234	5714G	860	+20	-4.7	+52	+98	+29	+60	+44	+71	+128	+237
235	5731K	920	+0	+4.7	+66	+122	+21	+11	+41	+68	+116	+218
236	5802K	835	+12	-1.3	+44	+83	+27			+63		
237	9701M	895	+11	-.6	+61	+113	+33			+66		
238	4829M	855	+11	+0	+65	+108	+24	+66	+59	+62	+138	+241
239	6724M	865	+7	+2.4	+68	+124	+25	+09	+31	+52	+116	+202
240	6798M	830	+12	-.7	+47	+91	+31	+51	+33	+67	+117	+219
241	6797G	930	+0	+3.0	+66	+117	+21	+40	+28	+48	+126	+211
242	4814G	925	+11	-.9	+56	+106	+27			+48		
243	5721M	900	+9	+8	+64	+118	+28	+02	+37	+63	+109	+204
244	3715M	890	+13	-2.2	+46	+87	+33	+28	+44	+49	+114	+197
245	1775M	810	+13	-.6	+59	+94	+26	+63	+67	+59	+133	+232
246	8503K	805	+15	-2.0	+46	+79	+24	+69	+53	+47	+131	+217
247	1758B	845	+7	+8	+50	+89	+32	+28	+51	+56	+117	+208
248	7755C	900	+13	-.9	+56	+102	+29			+60		
249	0059C	845	+9	-.9	+60	+98	+25	+50	+41	+73	+126	+236
250	7758G	830	+4	+3.3	+70	+129	+23			+67		
251	7748M	845	+12	-.5	+51	+94	+23			+73		
252	5795M	860	+13	-1.3	+60	+99	+30			+68		
253	4783M	1055	+10	+4.7	+75	+129	+30	+49	+29	+81	+126	+244

LOT 254



12 head of April Commercial Angus Heifers (selling as a group lot)

Tag	Birth Date	Tattoo	Sire	BW	ADJ WW	Ratio	Weight
2735M	04/06/21	1247	Bruning Wabash 437	103	766	118	910
3731M	04/16/21	1254	LBDR 5142 Power Tool	63	667	103	810
4820G	04/15/21	1252	TC Forthright 333	68	626	96	745
4833C	04/15/21	1250	TC Forthright 333	73	631	97	805
5775M	04/08/21	1249	LBDR 9159-6145 Broken Bow	78	709	109	910
6708M	04/23/21	1255	TC Forthright 333	83	693	107	860
6720G	04/15/21	1251	LBDR 5142 Power Tool	79	711	110	905
7750M	04/02/21	1245	LBDR 5142 Power Tool	73	637	98	855
7770M	04/02/21	1244	LBDR 7108-5142 Power Tool	81	664	102	765
8758K	04/24/21	1256	TC Forthright 333	65	579	89	745
9768K	04/07/21	1248	LBDR 8176 Arsenal	65	621	96	750
9783K	04/02/21	1246	LBDR 8176 Arsenal	67	697	107	840

2/20/2022

AVG WT: 825